



Portable Incline Wash Plants TXW Series



A world working better™

 **TEREX** MPS

Cedarapids® Portable Plants

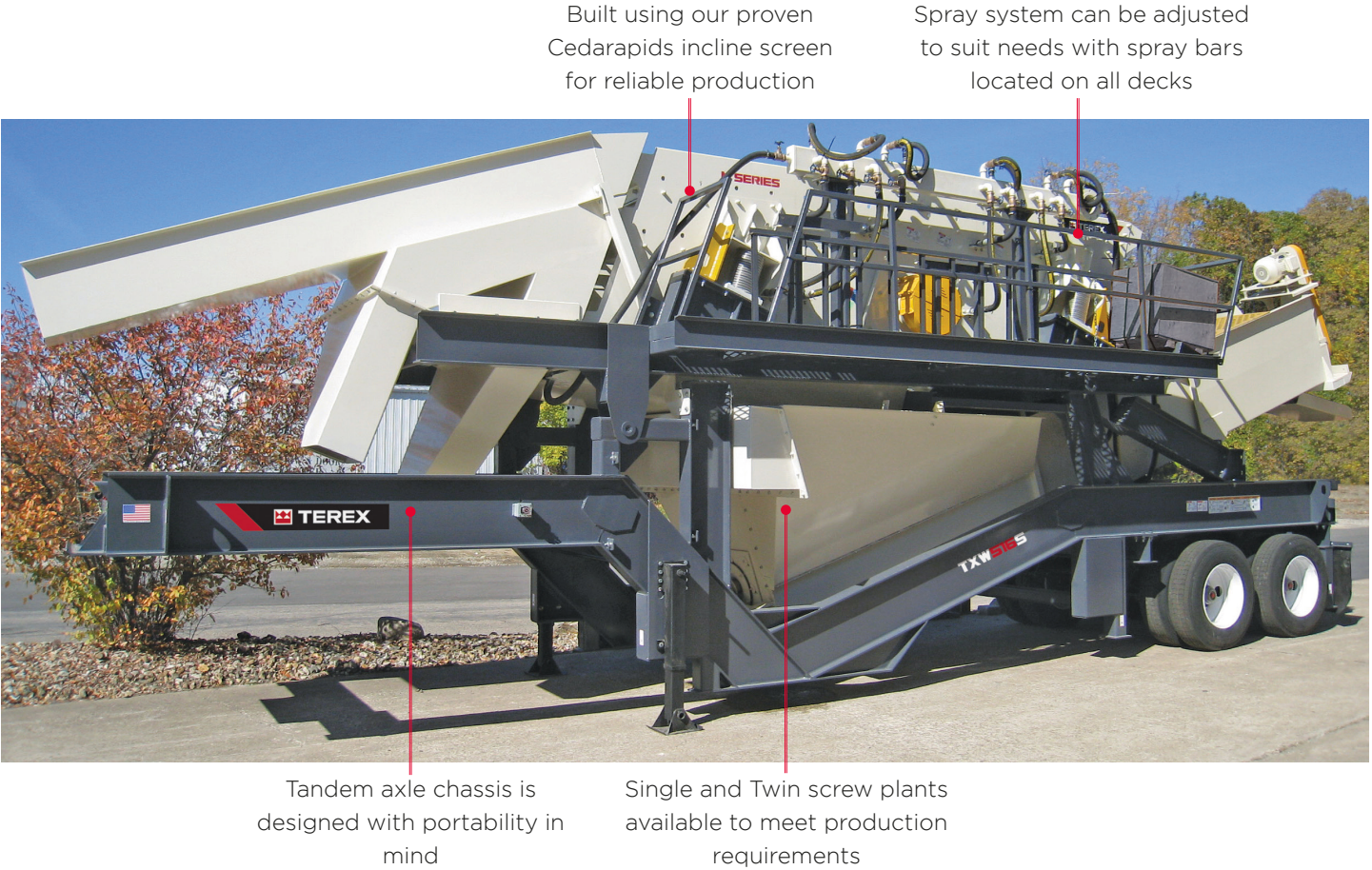
TXW Series Wash Plants

For portable screening and washing on a single chassis, look no further than the Cedarapids TXW Series of portable wash plants.

The screens are fitted with spray bars for material washing on all three decks. The feed box and under screen collection flume are also fitted with spray bars to keep material moving. The screen is complemented by single or twin screw fine material washer for removal of excess fines. Four different products can be made simultaneously with three washed and sized aggregate products and a sand product out of the fine material screw washer.



Model	TXW516S	TXW616T
Screen Box Size	5' x 16'	6' x 16'
Fine Material Washer Size	Single 36" x 25"	Twin 36" x 25"
Travel width	11' 3 - 1/2"	11' 10"
Total weight	41,000 lbs	57,000 lbs



Standard Features

- Triple deck inclined two bearing screen
- 1800 rpm, TEFC electric motor with screen V-belt drive
- Walkway access around three sides of the screen with an access ladder
- Under-screen fines collection flume is made from 1/4" plate and has a splash-type spray system. Water spray systems on all screen decks, flume and washout
- Heavy-duty 36" x 25' single or twin screw with 15 hp drive(s)
- Clear water manifold with the necessary plumbing
- Heavy-duty discharge chute made with 1/4" plate and lined with abrasion resistant plate in heavy wear areas.
 - Top deck over chute discharges to the front of the plant
 - Middle deck chute discharges to the side
 - Bottom deck chute discharges to the opposite side

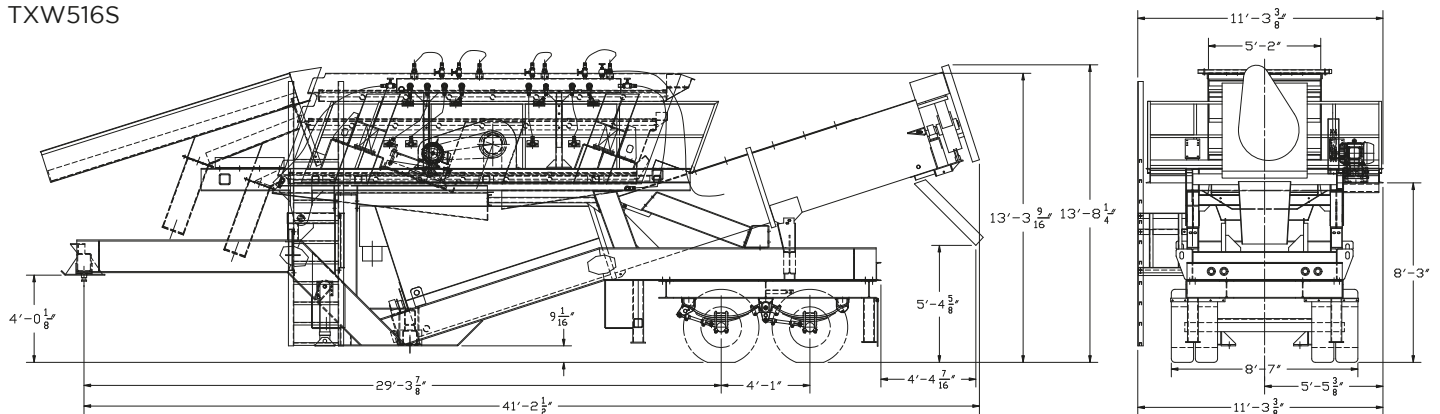
- All standard guards are included
- Chassis has heavy-duty I-beam frame with four braced support legs and 2 manual landing jacks. Includes tandem axle, fifth wheel, air brakes, mud flaps and tail lights

Optional Equipment

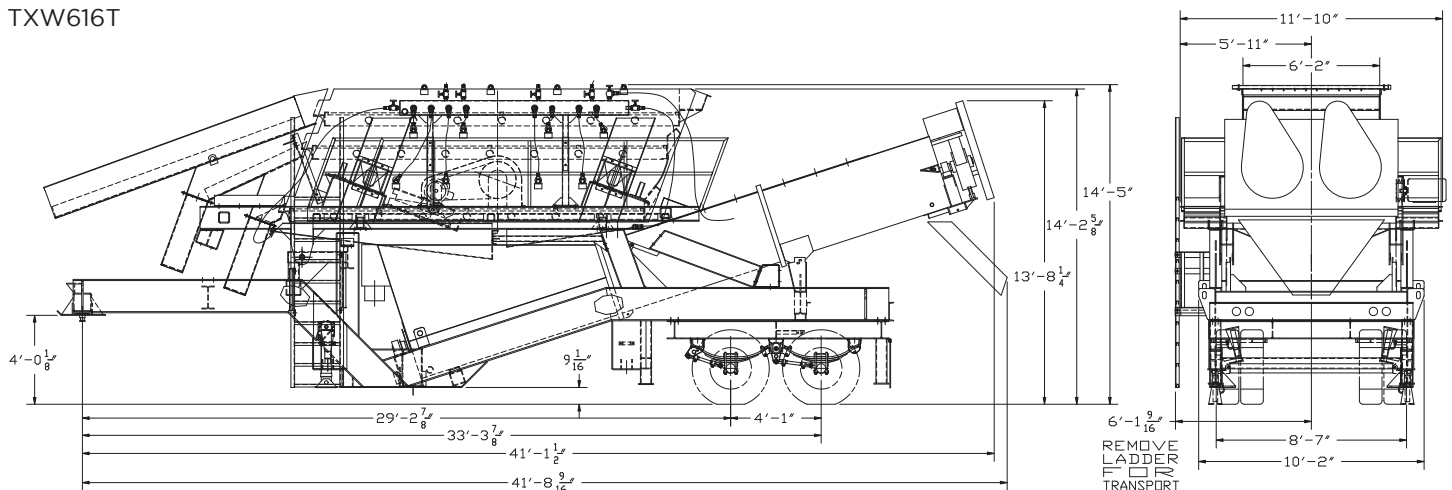
- Electrical switchgear panel
- Additional starters for off-plant conveyors
- Remote CCM motor controls
- 100' tether for switchgear panel
- Factory installed screen media
- Anti-lock brakes and marker lights
- Oversize 315/80 R22.5 tires

Transport Drawings

TXW516S

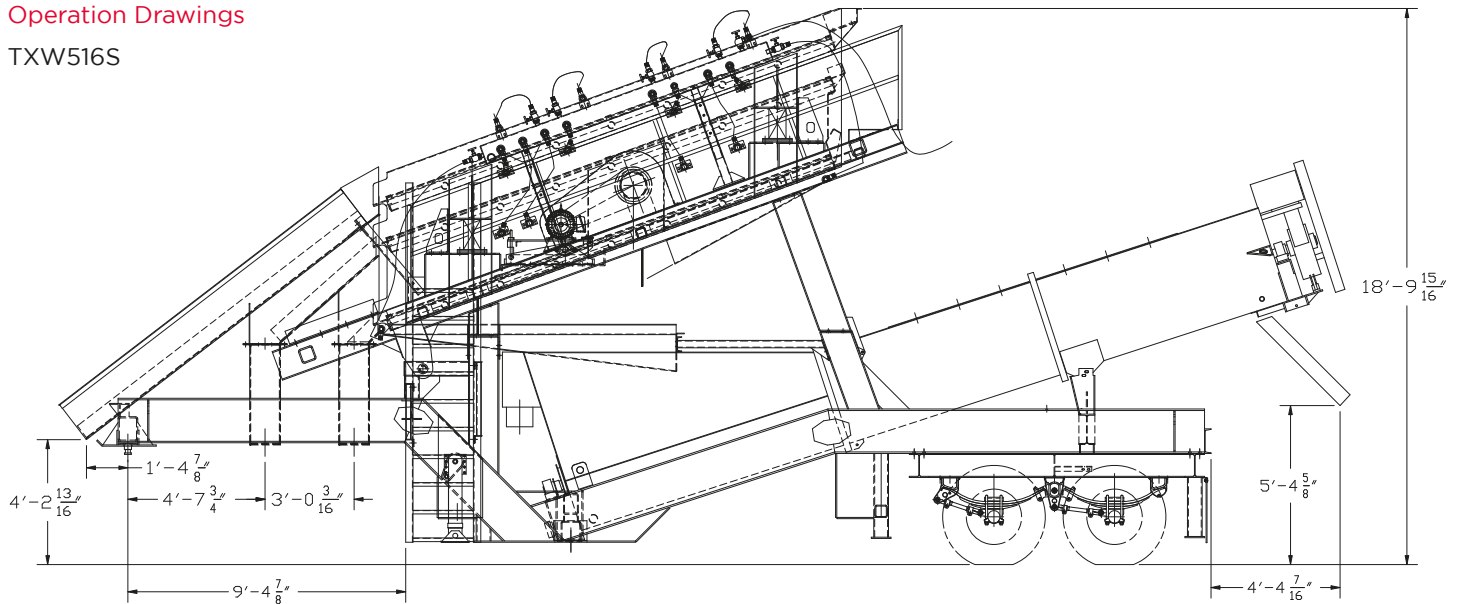


TXW616T

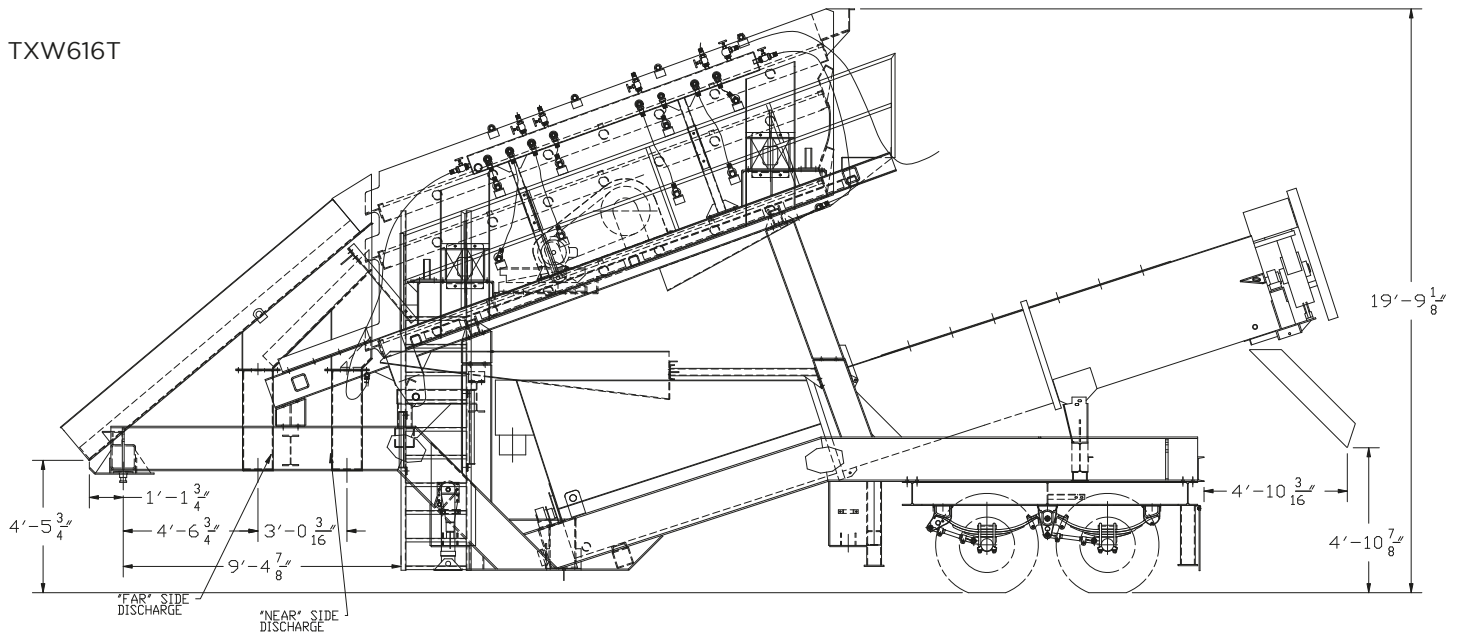


Operation Drawings

TXW516S



TXW616T



terexmps.com/cedarapids

Product specifications and prices are subject to change without notice or obligation. The photographs and/or drawings in this document are for illustrative purposes only. Refer to the appropriate Operator's Manual for instructions on the proper use of this equipment.

Failure to follow the appropriate Operator's Manual when using our equipment or failure to act responsibly may result in serious injury or death.

The only warranty applicable to our equipment is the standard written warranty applicable to the particular product and sale, and Terex makes no other warranty, express or implied. Terex, the Terex Crown design, Cedarapids, Canica, Simplicity, Jaques, El-Jay and Rollercone are trademarks of Terex Corporation or its subsidiaries. All rights are reserved. © June 2024.

HuckBolts is a registered trademark of Arconic Fastening Systems.